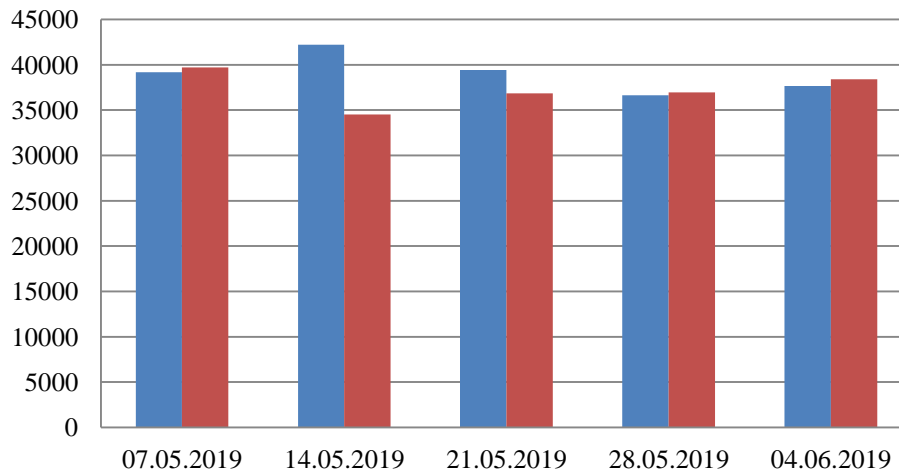


## TRENDS AND FIGURES AT A GLANCE

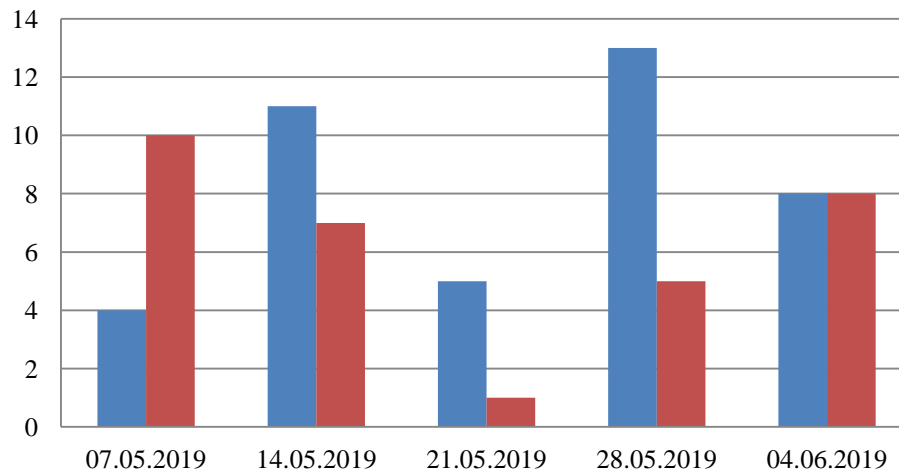
(For the period from 09:00 on 30 April to 09:00 on 4 June 2019)<sup>1</sup>

■ to the Russian Federation      ■ to Ukraine

### People crossings

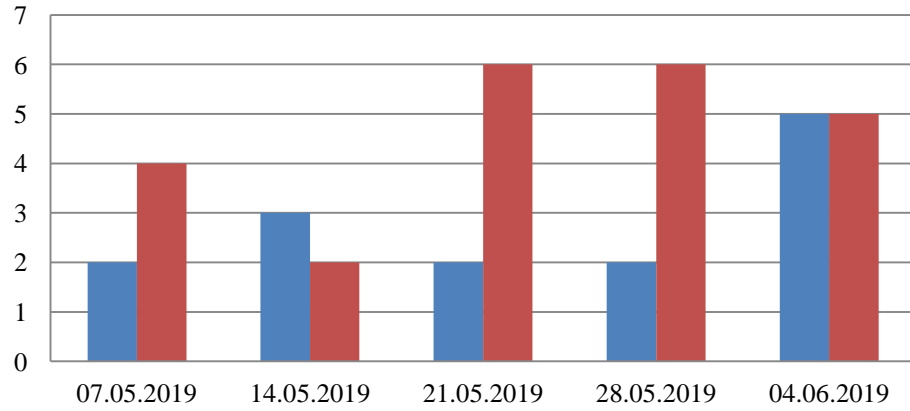


### Persons in military-style outfits

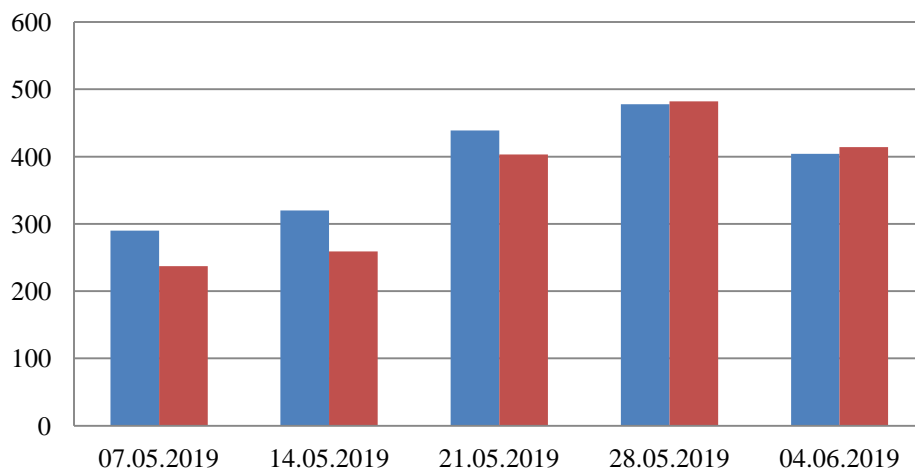


<sup>1</sup> The dates at the bottom of each graph refer to the day when the Weekly Reports were issued and include the observations made during the previous seven days.

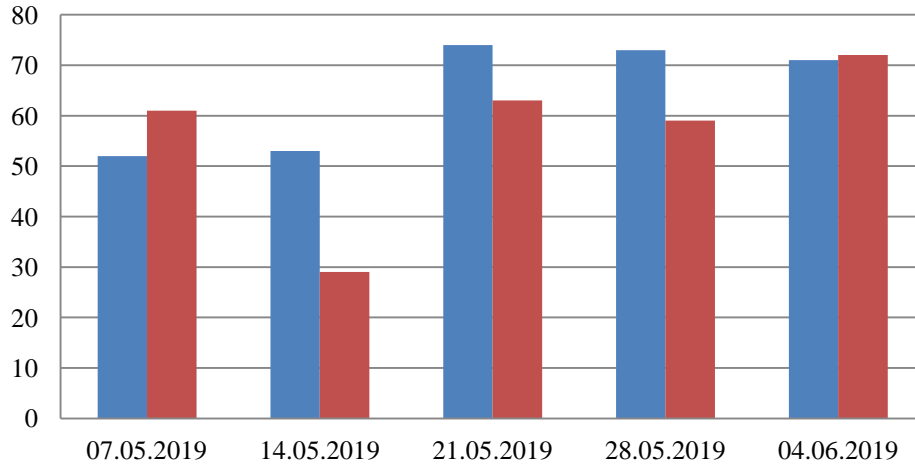
## Families with a significant amount of luggage



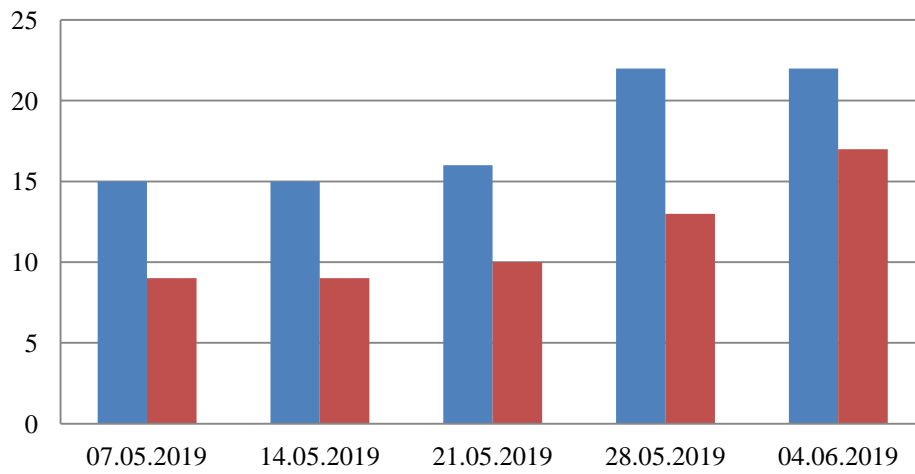
## Trucks



### Cargo minivans



### Trains



\*\*\*

### Timetable of the trains heard at the Gukovo BCP

Date	To RF	To UA
28.05.2019	11:28 15:14 17:17	19:44 21:46
29.05.2019	09:36 17:51 19:15 21:03	03:58 07:45
30.05.2019	05:42 15:35 22:34	03:54 05:41 12:22
31.05.2019	05:01 09:35 13:05	00:15 07:51 18:28 20:45
01.06.2019	11:41 15:56	
02.06.2019	06:13 13:25 17:42 18:48	15:57 16:26 23:34
03.06.2019	04:13 19:00	13:25 17:15
04.06.2019	05:35	03:30

\*\*\*\*