

# Elva

A mobile phone platform for tracking and addressing local security needs



[www.MyElva.com](http://www.MyElva.com)



@ElvaTeam

# Elva

A mobile phone platform that allows communities to monitor and map local security issues and to work with decision makers to develop an effective and locally appropriate response.

## Case study

2008 Russo-Georgian war

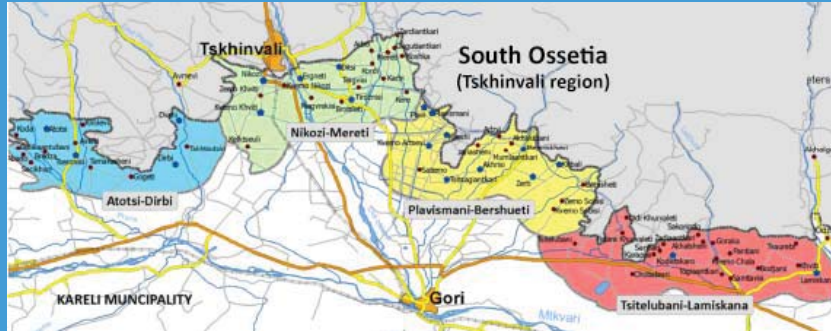


[www.MyElva.com](http://www.MyElva.com)



@ElvaTeam

## Conflict-affected communities



18 conflict-affected communities  
35000 inhabitants

 [www.MyElva.com](http://www.MyElva.com)

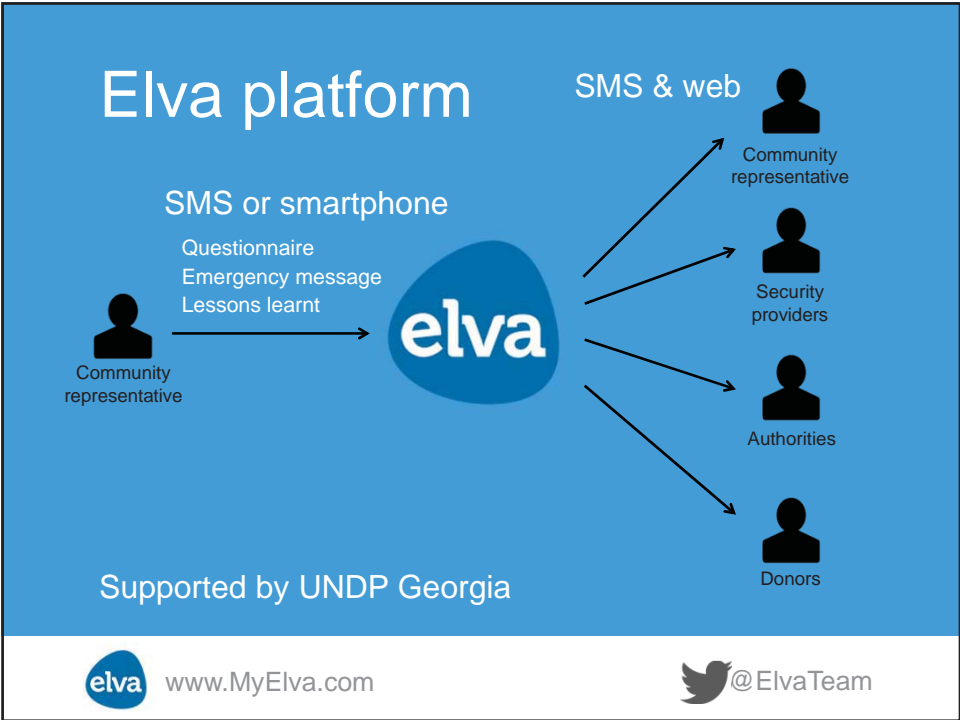
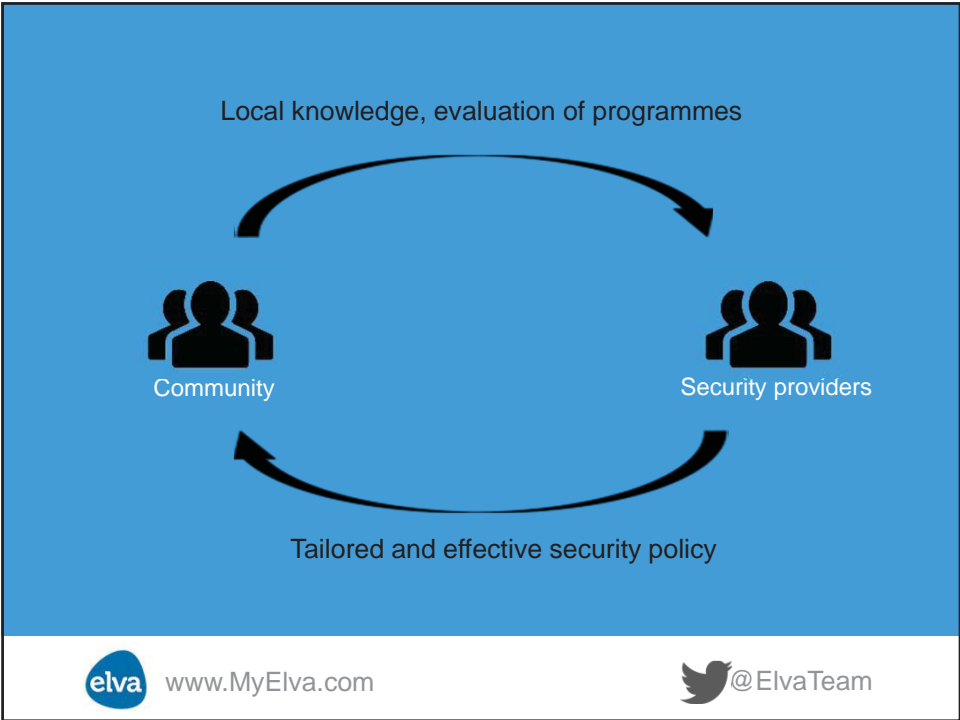
 @ElvaTeam

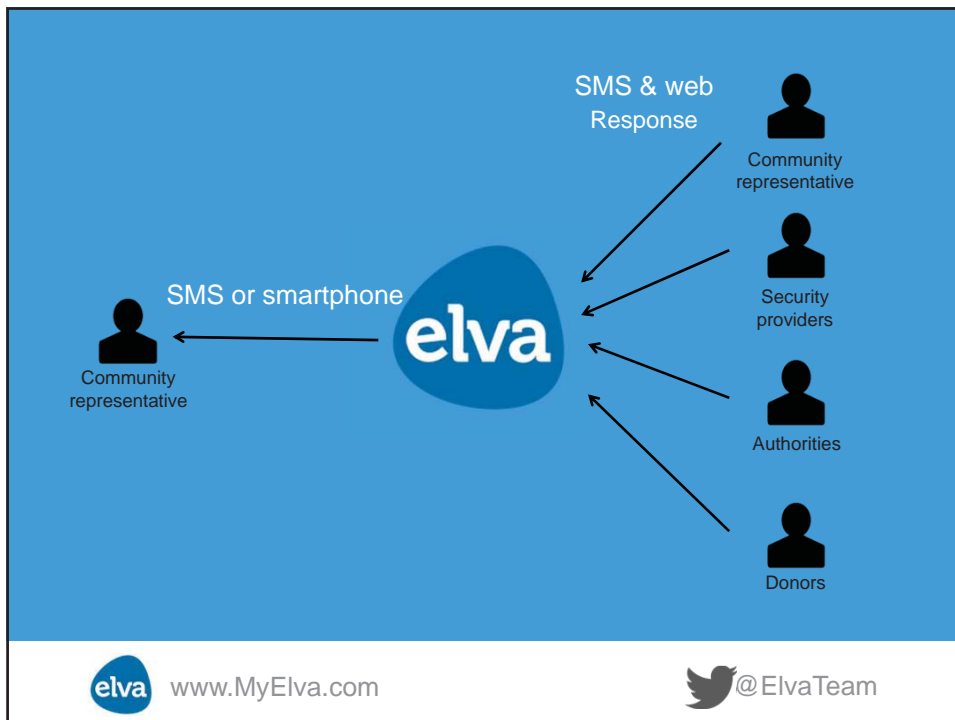
## Core problem

Security strategies are often insufficiently responsive to the evolving security needs & interests of local populations

 [www.MyElva.com](http://www.MyElva.com)

 @ElvaTeam





## Citizen monitors

- 24/7 in the community
- Broad network of contacts

## SMS & Mobile app

- Most widespread communication medium
- Reaches the most remote areas

At the bottom of the slide, there is the Elva logo, the website [www.MyElva.com](http://www.MyElva.com), and the Twitter handle [@ElvaTeam](https://twitter.com/ElvaTeam).

# Aim:

obtaining data on

**what**      **how**      **what**  
incidents      those impact      solutions are  
take place      communities      being suggested

 [www.MyElva.com](http://www.MyElva.com)

 @ElvaTeam

## SMS Questionnaire

- In-depth, structured baseline data
- Up to 40 variables within one SMS message
- Example message:  
a#ssm2b#ssmc#5d#ara00e#  
pmg7ema2
- Example variables:
  - Sense of safety in community
  - Visits by security providers
  - Cross-border interaction

 [www.MyElva.com](http://www.MyElva.com)

 @ElvaTeam

 **COMMUNITY SAFETY NETWORK**  
Weekly Survey

Start your message by typing:

A. If any of the below incidents have happened in your community in the last week, please indicate which type of incidents, and the number of times these incidents happened.

Agricultural / livestock thefts	<input type="text"/>
Other thefts in the community	<input type="text"/>
Livestock crossing the ABL and not allowed to return	<input type="text"/>
Robbery	<input type="text"/>
Extortion / forced donation	<input type="text"/>
Murder	<input type="text"/>
Violent attacks (grievous bodily harm)	<input type="text"/>
Kidnapping of people	<input type="text"/>
Destruction of property	<input type="text"/>
Injuries caused by unexploded ordnance	<input type="text"/>
Shootings in the distance	<input type="text"/>
Shootings near your community	<input type="text"/>
Shootings directed at your community	<input type="text"/>
Clashes between security forces	<input type="text"/>
Movement by armed gangs across the ABL	<input type="text"/>
Threats or other actions by the Russian military that cause new concern	<input type="text"/>
Threats or other actions by Ossetians across the ABL that cause new concern	<input type="text"/>

CODES

A: #

CODE

A: G: R

O: T: H

L: I: V

R: O: B

E: X: T

M: U: R

V: I: O

K: I: D

D: E: S

I: N: J

S: D: I

S: N: E

S: A: T

C: L: A

M: O: V

R: U: S

O: S: S

Home Assistant Talk

## Community Safety Network

**SECURITY INCIDENTS**

- SHOOTINGS
- DETENTIONS
- LANDMINES
- ARMED GROUPS
- BORDERIZATION
- DISASTER RISK
- EQUIPMENT

SUBMIT REPORT

Police training in Dvani

Community meeting

Shooting in Dvni

[@CSN](#)

Not surprised by incidents in Zestaponi. Anyone in touch with the police?

### Police training in Dvani

On 5 June a police training was held in Dvani. Lorem ipsum dolor sit amet, consectetur adipiscing elit, sed do eiusmod tempor incididunt ut labore et dolore magna aliqua. Ut enim ad minim veniam, quis nostrud exercitation ullamco laboris nisi ut aliquip ex ea commodo consequat. Duis aute irure dolor in reprehenderit in voluptate velit esse cillum dolore eu fugiat nulla pariatur.

**152 INCIDENTS**  
THIS WEEK

Average number of incidents per week:  
**110**

**MOST FREQUENT**

**22 SHOOTINGS**  
**9 KIDNAPPINGS**  
**7 ARMED GROUPS**

**MOST UNSAFE**

**1. ZERTI**  
**2. KIRBALI**  
**3. AKHRISI**

Search:

Date	Shootings	Detentions	Landmines	Armed Groups
March 1, 2013	4	2	5	7
March 10, 2013	1	3	6	1
March 15, 2013	5	2	7	4
March 20, 2013	6	3	2	8
April 1, 2013	7	1	2	4
April 10, 2013	4	1	1	3
April 15, 2013	5	2	4	1
April 20, 2013	1	3	7	4
May 1, 2013	6	2	5	1
May 10, 2013	2	4	1	6
May 15, 2013	3	8	0	2
May 20, 2013	4	2	6	1



## Output

Average per year for the  
Community Safety Network

- 1042 incidents reported
- 18 emergency situations reported and addressed
- 4106 visits by security providers reported
- 52 weekly reports automatically generated
- 6 analytical tracking reports drafted



[www.MyElva.com](http://www.MyElva.com)



@ElvaTeam

## Results

Since 2010

- Effective crisis management
- Early warning
- Increased knowledge sharing and cooperation
- Improved security strategies, through effective beneficiary feedback



[www.MyElva.com](http://www.MyElva.com)



@ElvaTeam

[www.MyElva.com](http://www.MyElva.com)



[www.MyElva.com](http://www.MyElva.com)



@ElvaTeam