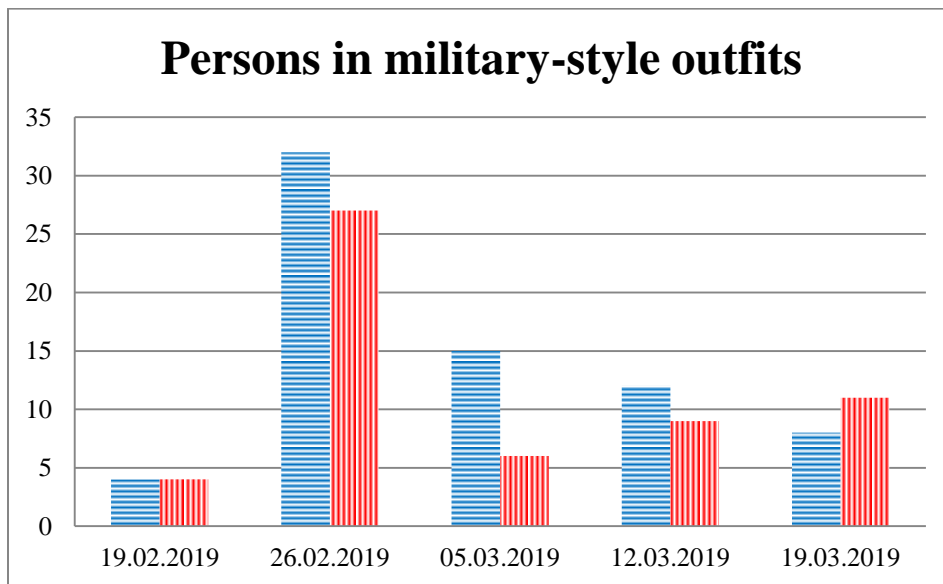
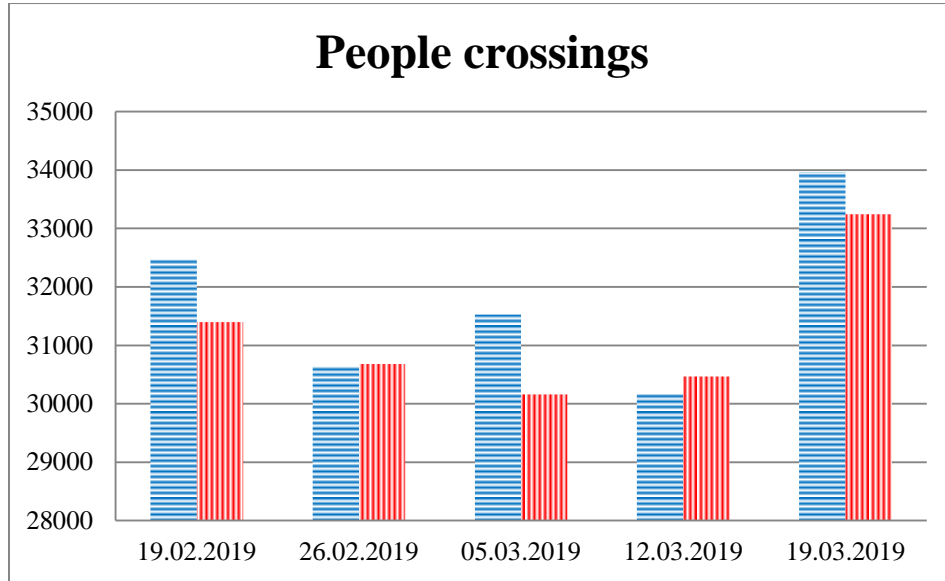


## TRENDS AND FIGURES AT A GLANCE

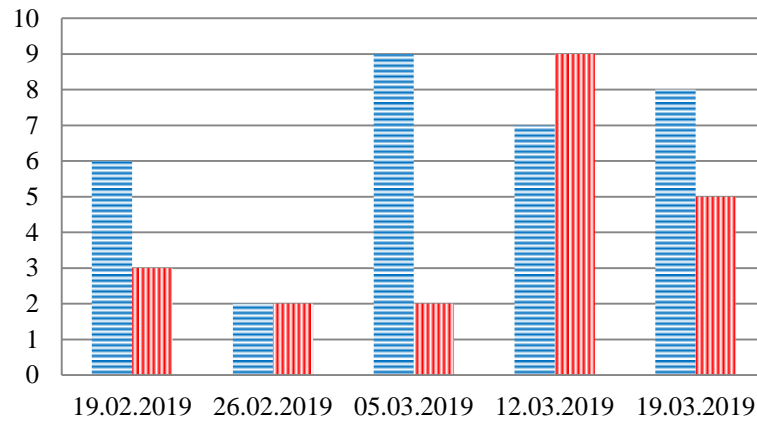
(For the period from 09:00 on 12 February 2019 to 09:00 on 19 March 2019)<sup>1</sup>

■ to the Russian Federation      ■ to Ukraine

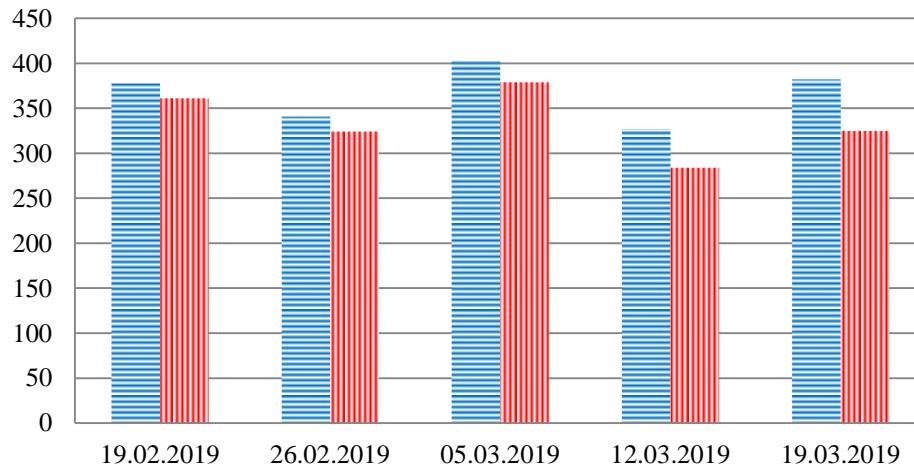


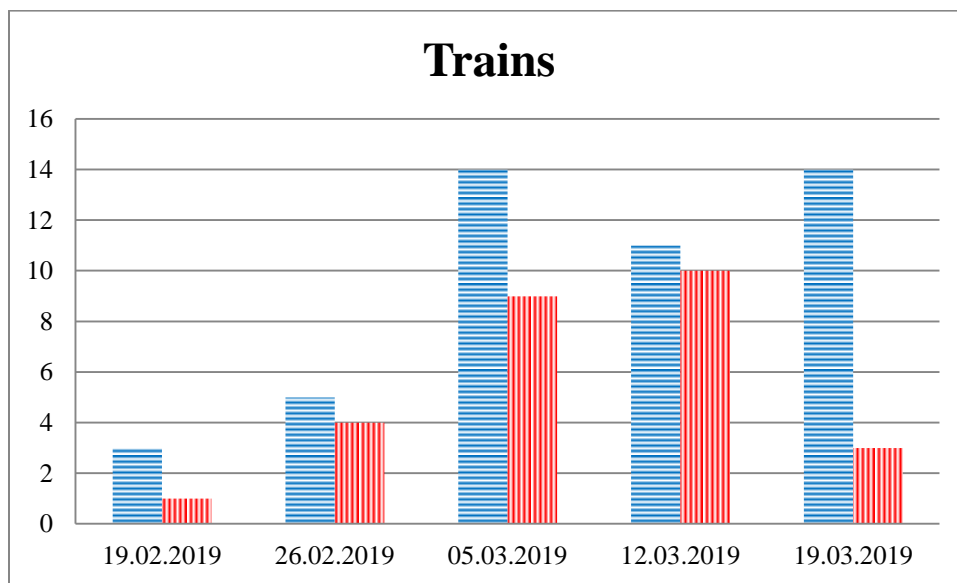
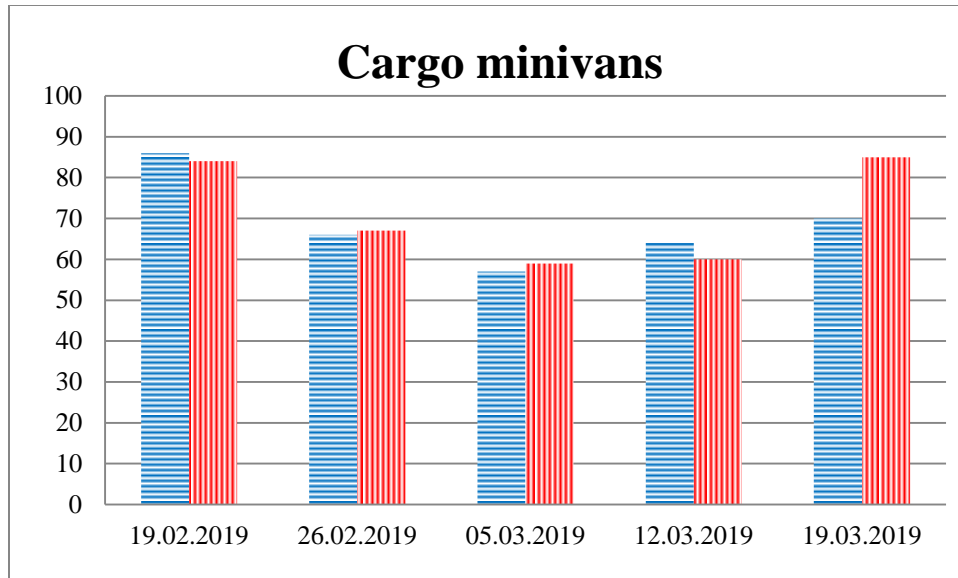
<sup>1</sup> The dates at the bottom of each graph refer to the day when the Weekly Reports were issued and include the observations made during the previous seven days.

### Families with a significant amount of luggage



### Trucks





\*\*\*

**Timetable of the trains heard at the Gukovo BCP**

<b>Date</b>	<b>To RF</b>	<b>To UA</b>
12/03/2019	-	-
13/03/2019	12:35 15:52	14:08
14/03/2019	13:30	-
15/03/2019	19:55 21:41 05:23 07:50	-
16/03/2019	15:00 15:49	13:07
17/03/2019	11:55 15:20	-
18/03/2019	18:23 20:23 03:06	02:03

\*\*\*\*