



## Organization for Security and Co-operation in Europe

The Secretariat

Procurement and Contracting Unit

Wallnerstrasse 6, A - 1010 Vienna

---

Date: October 17, 2008

### Clarification Note No. 1

#### **ITB No. 21/2008 - Construction of Accommodation Block Using Pre-Fabricated Modular Portable Buildings in Dushanbe, Tajikistan**

---

The Organization for Security and Co-operation in Europe ("the OSCE") has received a request for clarification from a potential bidder.

In accordance with Article 10 "Clarification of Bidding Documents" of Section I of the Bidding Documents the OSCE would like to provide the following clarification:

#### **Questions:**

1. Is Contractor scope of work to connect the accommodation block to the primary power source from municipal mains power? And if YES which distance (meters) is this connection between the accommodation block and the municipal mains power?
2. Which distance (meters) is the connection between the site main distribution board and the accommodation block?
3. Which distance (meters) is the connection between the municipal water mains and the accommodation block?
4. Which distance (meters) is the connection between the existing site main sewage manhole and the accommodation block?

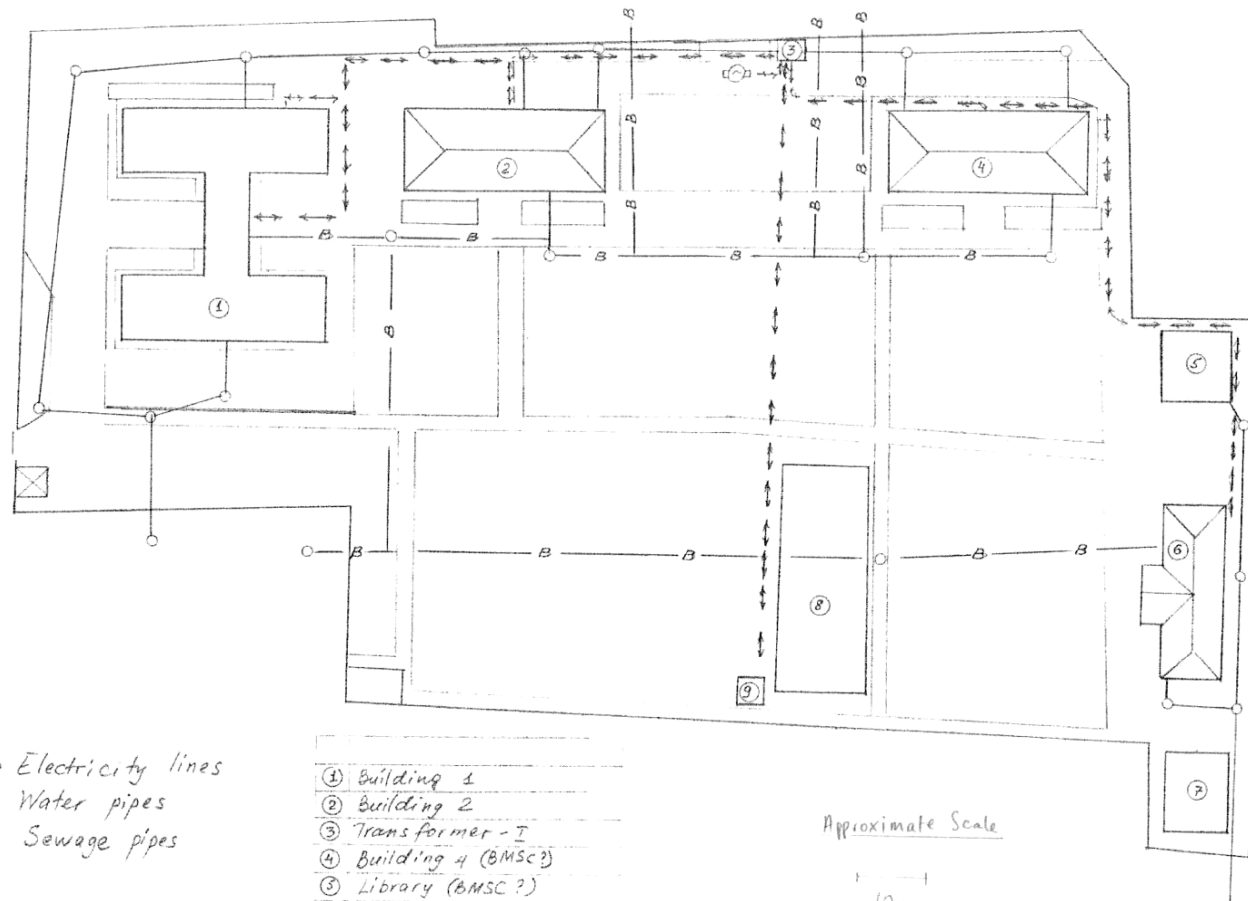
#### **Answers:**

In accordance with para 17 of Section IV-B "Performance Specifications" of the Bidding Documents the Contractor shall be responsible for executing the connection to the site main distribution board.

The attached layout is indicative only and represents a rough overview of distances and shall not in any way be considered by Bidders as the binding technical data in the preparation of bids. The OSCE does not represent that the attached layout is accurate nor shall the OSCE accept any liability whatsoever in respect to the information it contains.

Please note that it is the Contractor's responsibility to conduct all necessary measurements as part of the scope of work.

In accordance with Article 8.1 of Section I of the Bidding Documents, bidders are encouraged to visit and examine the Site of Works and its surroundings and obtain all information that may be necessary for preparing the Bid and entering into a contract for construction of the Works if they are the selected Bidder.



↔ Electricity lines  
 -B- Water pipes  
 -O- Sewage pipes

- ① Building 1
- ② Building 2
- ③ Transformer - I
- ④ Building 4 (BMSC?)
- ⑤ Library (BMSC?)
- ⑥ Building 6
- ⑦ Swimming pool
- ⑧ Tennis court
- ⑨ Transformer - II

Approximate Scale

10m