

# Wind farm Baku



50 Megawatts renewable energy  
in co-operation of

**Mitaki Project GmbH**  
GERMAN ENERGY PARTNERS

 **airwerk**

## Project scope

- Turn key delivery of 50 MW Wind farm
  - 20x 2,5 MW Wind energy converter (WEC) up to 80m hub height
  - Project will involve:
    - Finance structuring
    - Design
    - Procurement
    - Construction
    - Commissioning
    - Training of customers employees
    - Logistics / DDU
    - Management (Project, Quality, Construction)
  - Project duration: 16 months (Sept. 09 – Dec.10; dependent of L/C)

# Project stakeholders

## Turn key delivery of 50 MW Wind farm

The project will involve

- financing by two European banks with the support and warranty of International Bank of Azerbaijan
- an innovative financing structure developed by Mitaki project GmbH Hamburg (Germany) with great support of the federal Republic of Germany which grants an export credit insurance through its state-owned insurance agency Euler Hermes Kreditversicherung
- approximately 15 German and European companies for engineering, design, logistics and manufacturing of equipment as well as 10 Azeri companies for construction works, local logistics and management under the leadership of the general supplier airwerk GmbH, Essen (Germany)

# Organizational structure



## Mitaki: overall project

Financing

Consulting

Legal advice

## Airwerk: System responsible

engineering

logistics

### Key partner

WEC

Trans-  
former

Tower

Construction

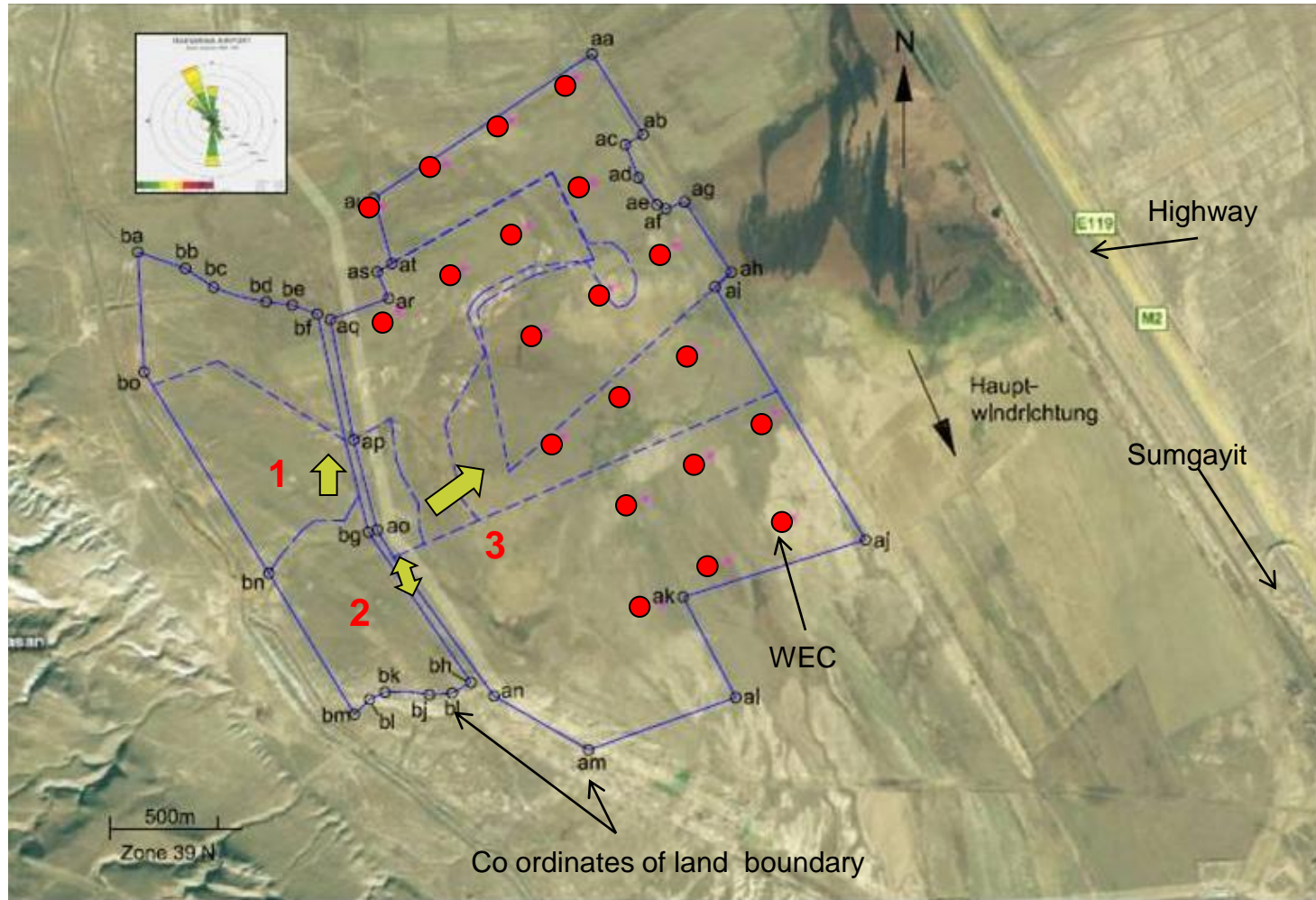
others

# General information

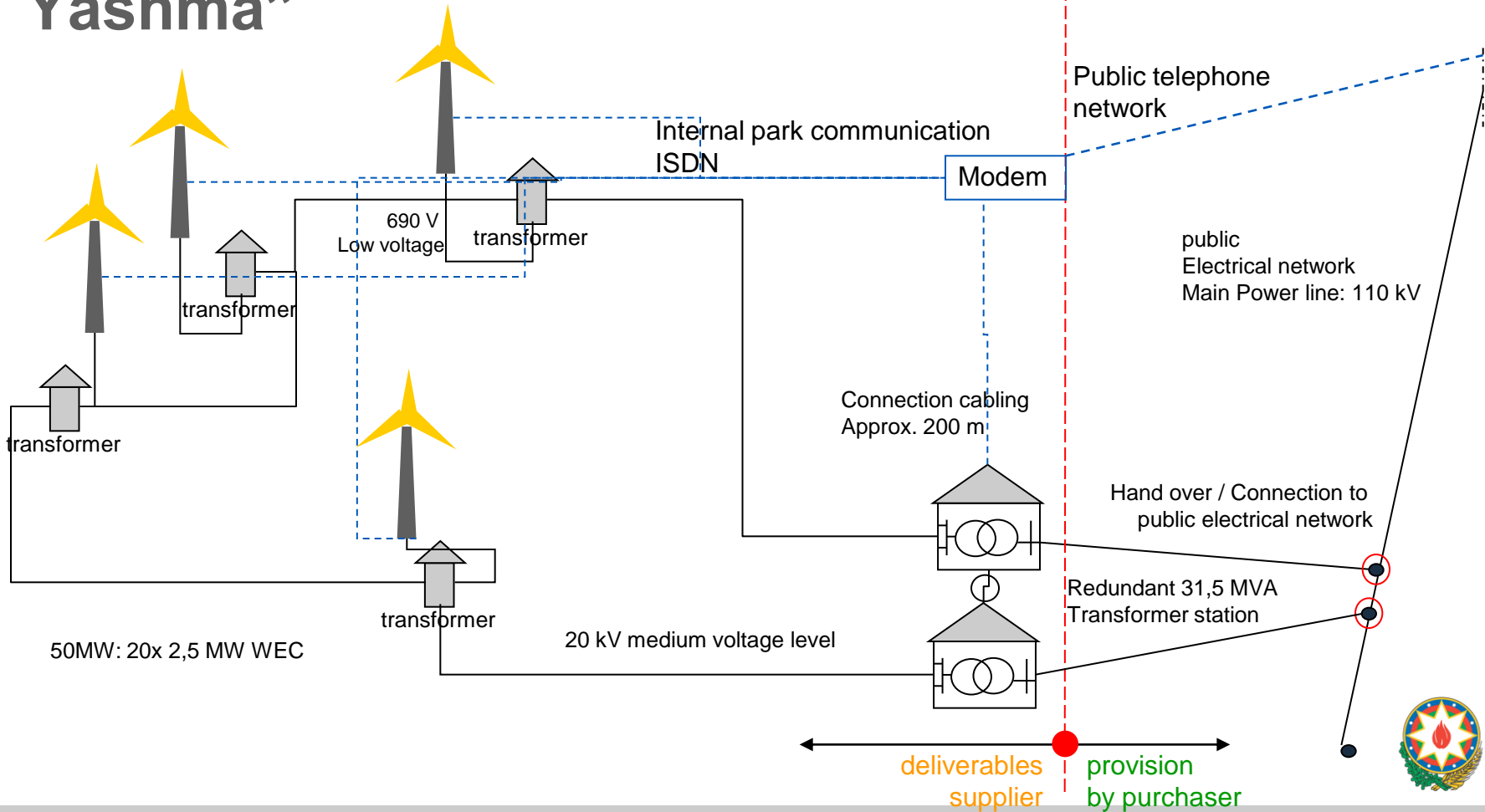


Wind energy potential in the Absheron economical region about 1000 Megawatts

# Location „Yeni Yashma“



# Scope & Interfaces pilot wind farm “Yeni Yashma”







# Turbine production



## Transport of blades



## Hub with blades



## Hub with blades



## Future view “Yeni Yashma”

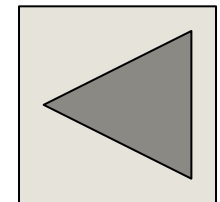


## Future view “Yeni Yashma”



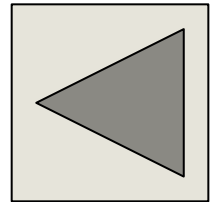
**Thank you**

# 1:Location „Yeni Yashma“ North View





## 2: Location „Yeni Yashma“ canal



### 3:Location „Yeni Yashma“ East View

