

Gümrük ve Turizm İşletmeleri Ticaret A.Ş.



**MODERNIZATION OF BORDER CROSSING
POINTS IN TURKEY:
New Prospects of PPP and Joint Border Crossing
Model**

**Omur Gebes
General Manager
Vienna, February 2010**

Gümrük ve Turizm İşletmeleri Ticaret A.Ş.



Introduction of GTI

- ✓ **Private company**
- ✓ **Incorporated to modernize and operate border gates**
- ✓ **Owned by Turkish Chambers and their federation, TOBB.**
- ✓ **TOBB has 1,3 million members and is the Highest level representative of Turkish private sector.**

How GTI Operates?

- ✓ Operations are based on Public Private Partnership
- ✓ Model “Build-Operate-Transfer” →
- ✓ No burden for public treasury
 - ✓ Build
 - ✓ Operate***
 - ✓ Transfer

*** Operation of only commercial facilities; customs procedures are still undertaken by Customs Authorities

First Step for the Facilitation of Border Crossings

Modernized and operating:

- ✓ Kapıkule (TR-Bulgaria)
- ✓ Hamzabeyli (TR-Bulgaria)
- ✓ Habur (TR-Iraq)
- ✓ Sarp (TR-Georgia)
- ✓ Cilvegözü (TR-Syria)
- ✓ İpsala (TR-Greece)

First Step for the Facilitation of Border Crossings

Commissioned to take over:

- ✓ Dereköy (TR – Bulgaria)
- ✓ Nusaybin (TR – Syria)
- ✓ Akçakale (TR – Syria)
- ✓ Öncüpınar (TR – Syria)
- ✓ Yayladağı (TR – Syria)
- ✓ Karkamış (TR – Syria)
- ✓ Esendere (TR – Iran)
- ✓ Dilucu (TR – Azerbaijan)
- ✓ Türkgözü (TR – Georgia)

Outcomes of the Projects

- ✓ Effective fight with smuggling, with the help of high-tech. infrastructure
- ✓ User satisfaction
- ✓ More rapid and effective service
 - ✓ No more queues
 - ✓ Border waiting time decreased from 30 to 10 min.
 - ✓ Process time decreased

Outcomes of the Projects

- ✓ Total Investment : \$190.000.000
- ✓ Additional Tax : \$31.000.000
- ✓ Created more than 1000 jobs
- ✓ Business oppurtunities for more than 350 companies
- ✓ 24 hour service with qualified human force
- ✓ Facilities such as duty-free shops, banks, fuel stations, shopping centers are in service.

SARP BORDER GATE (TR - GEORGIA)

Before Modernization



After Modernization



KAPIKULE BORDER GATE (TR - BULGARIA)

Before Modernization

After Modernization



HABUR BORDER GATE (TR - IRAQ)

Before Modernization

After Modernization



Gümrük ve Turizm İşletmeleri Ticaret A.Ş



CİLVEGÖZÜ BORDER GATE (TR - SYRIA)

Before Modernization

After Modernization



Gümrük ve Turizm İşletmeleri Ticaret A.Ş



HAMZABEYLİ BORDER GATE (TR - BULGARIA)

Before Modernization

After Modernization



İPSALA BORDER GATE (TR - GREECE)

Before Modernization



After Modernization



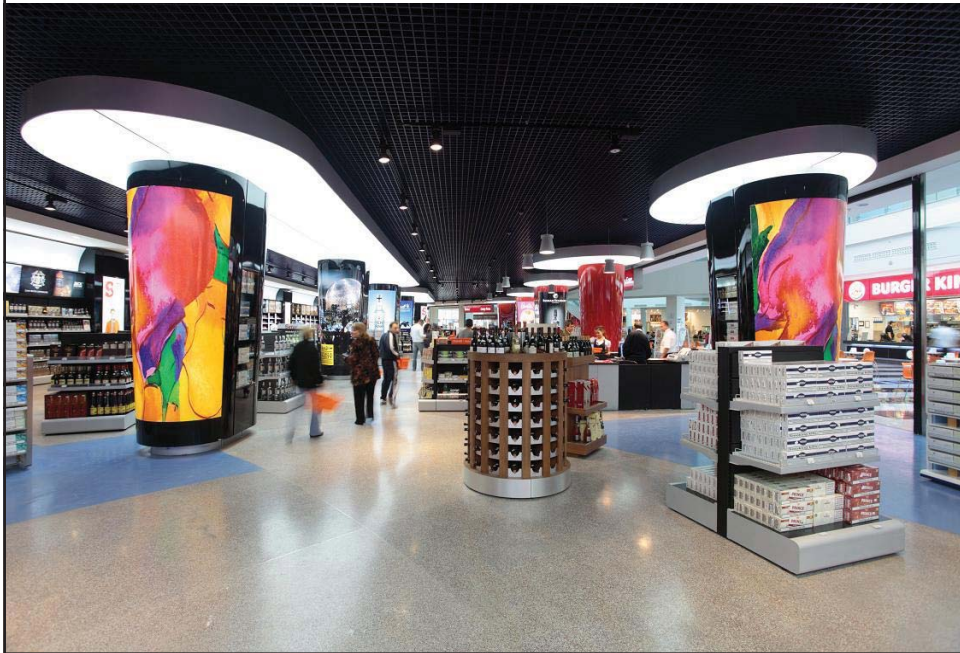
TURKEY – GEORGIA



TURKEY - GEORGIA



TURKEY – BULGARIA



TURKEY - BULGARIA



Gümrük ve Turizm İşletmeleri Ticaret A.Ş.



TURKEY - BULGARIA





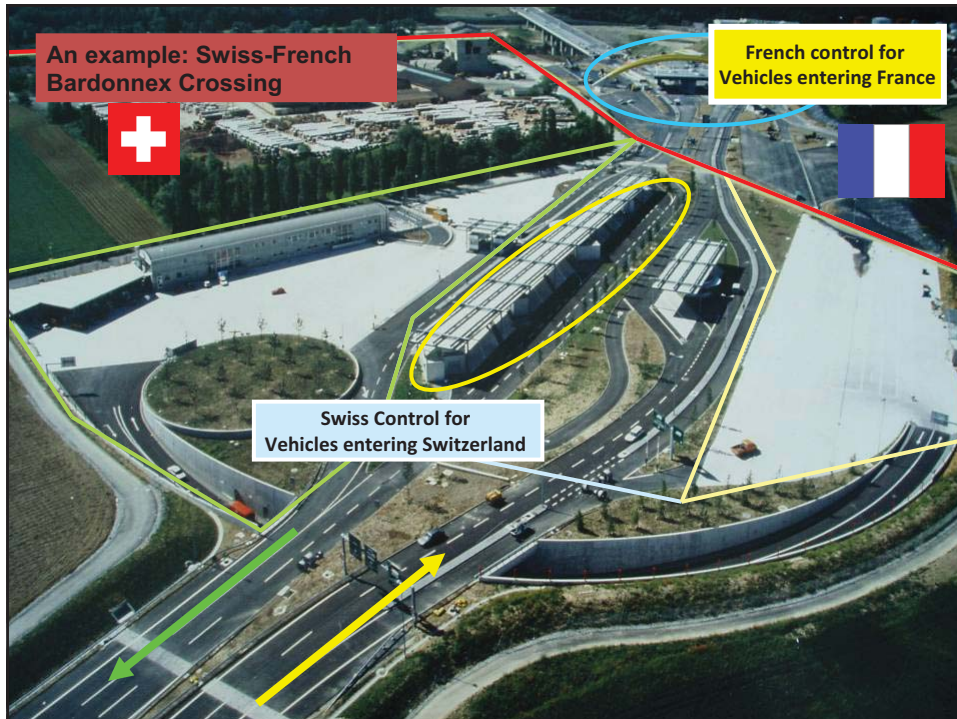
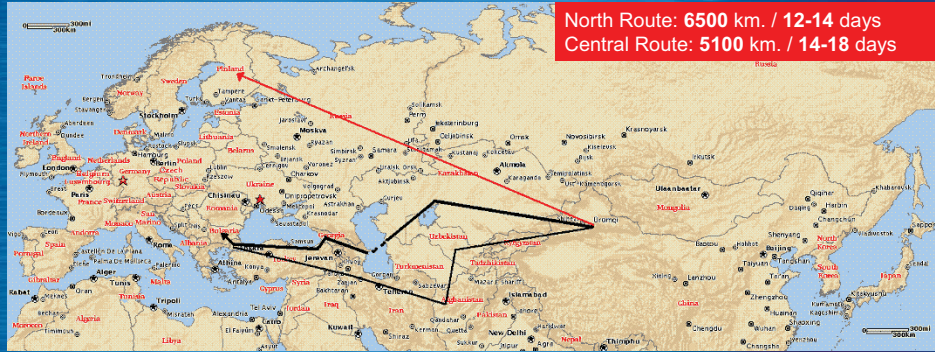
Joint Border Crossing Model

- ✓ One common border gate area
- ✓ Officers from both countries acting together
- ✓ Elimination of redundancies:
- ✓ Joint and single control of certificates.
- ✓ No duplications

Why JBCM?

- ✓ Ideal solution to meet the increasing demand
- ✓ 60-70 % of decrease in the BORDER WAITING TIME is expected.
- ✓ Capacity will increase threefold.

Alternative Routes Of Silk Road





ÖNCÜPINAR - AL SELAMA
ORTAK GÜMRÜK KAPISI
JOINED BORDER GATE



ÖNCÜPINAR - AL SELAMA ORTAK GÜMRÜK KAPISI
ÖNCÜPINAR - AL SELAMA JOINED BORDER GATE

PROTOKOL, İDARİ BİNA, KANOPİLER- PERSPEKTİF / PROTOCOL, COMMERCIAL BUILDINGS, CANOPIES - PERSPECTIVE ÖLÇEK - SCALE: 1/500



Gümrük ve Turizm İşletmeleri Ticaret A.Ş



TOBB



Thank You...