

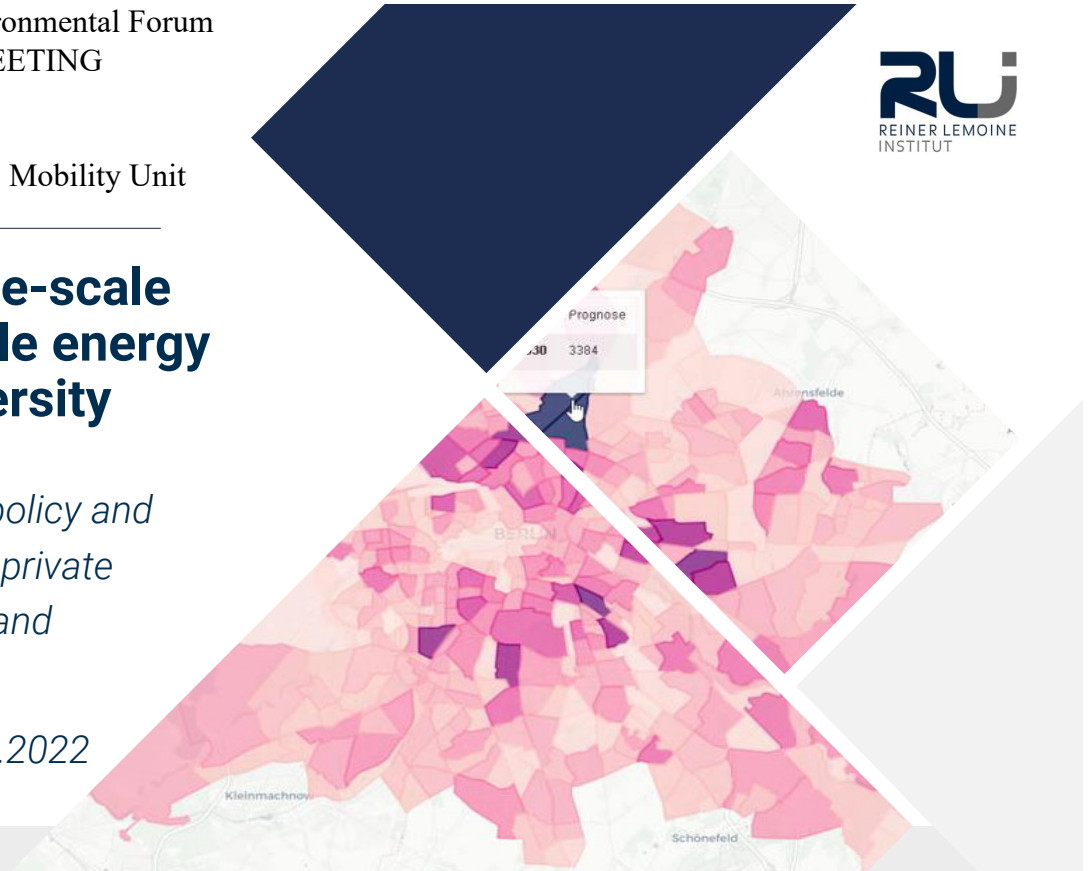
30th OSCE Economic and Environmental Forum
SECOND PREPARATORY MEETING
Łódź, Poland, 23-24 May 2022
Session 2
Ms. Juliane Arriens, Researcher, Mobility Unit
Reiner Lemoine Institute



Supporting large-scale use of renewable energy and energy diversity

— *The role of public policy and partnerships with the private sectors, civil society, and academia*

Juliane Arriens, 23.05.2022



Aspects of supporting Renewable Energy Scale-up



- 1) Education and Research
- 2) Equal Opportunities
- 3) Trainings and Workshops
- 4) Information and Participation
- 5) Implementation
- 6) Partnerships and Synergies

1) Education and Research



- All our research projects are in cooperation with partners from public authorities, the private sector, civil society...
- These partnerships are crucial in accelerating innovation and scale-up in the energy transition

Reiner Lemoine Institute

- Non-profit research institute
- 100 % subsidiary of Reiner Lemoine-Foundation (RLS)
- Founded 2010 in Berlin
- Managing Director: Dr. Kathrin Goldammer
- ≈ 100 researchers and students

We conduct applied research to scientifically support the long-term transition of the energy supply system towards renewable energy.

2) Equal Opportunities

How to omit a shortage of skilled workers?

Only 32 % share of women in the renewable energy workforce *



Cease the talent –
Promote equal opportunities in the renewable energy sector



Reiner Lemoine Institute

- The Reiner Lemoine Institute is the first and only research institute in Germany reaching gender-parity across all levels
- Its gender equality plan is part of the public RLI charter

* IRENA (2019), Renewable Energy: A Gender Perspective. IRENA, Abu Dhabi.

3) Trainings and Workshops

How can we accelerate energy resource assessments and structural planning?



Offer trainings on renewable energies to public bodies



Promote the use of open source software and data in energy planning

Workshop for GIS-tools in the Aral Sea region

- American University of Central Asia & RLI, funded by GIZ.
- Earth Observation and Geoinformation System (GIS) tools as decision support tools.
- The training is specifically targeted to political, public and private decision makers and stakeholders.
- Know how on the use for planning purposes e.g. for (renewable) energy resource assessment and infrastructure planning.

4) Information and Participation

How can we inform and involve a broad audience?

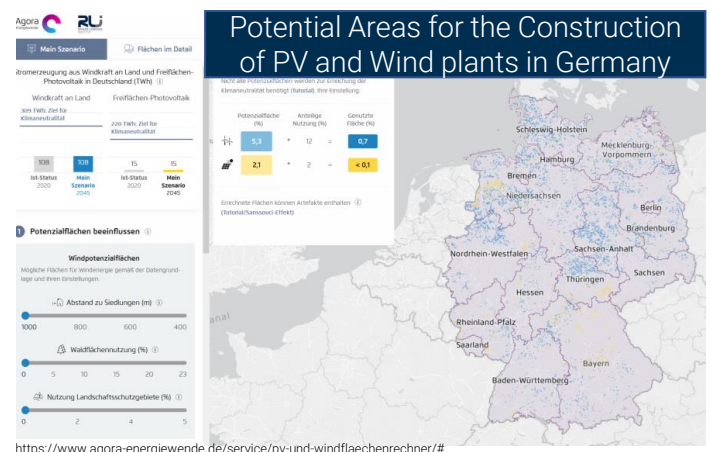
Open Science:

- Publications available in open access
- Data as open as possible and as closed as necessary
- Effective use of public funding

Stakeholder Empowerment Tools:

Interactive app that can be used by stakeholders

- Acquire knowledge
- Access the consequences of a decision



5) Support the Implementation

How can we support project development and implementation?

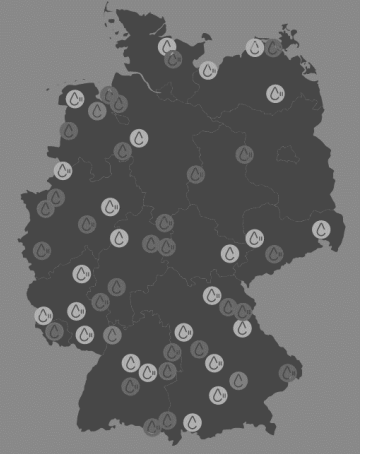
- Create common standards and regulatory processes
- Support regions in implementing renewable energies and energy storages
- Increase production capacities for renewable energy technologies

Hyland* -Hydrogen Regions

The Reiner Lemoine Institute (among others) supported regions with feasibility studies on green hydrogen:

- Funding mechanism to support regions in building up hydrogen economies
- H2 produced locally and from renewable energies
- Consumed within the regions

* www.hy.land

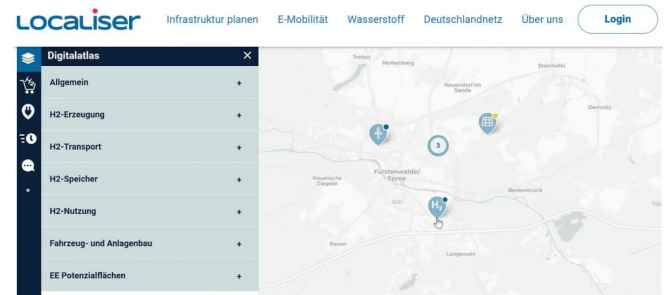


6) Promote partnerships and synergies

How can we create synergies between sectors and new regional partnerships?

- Support common digital platforms to connect regional stakeholders
- Use the advantage of digitalization to gather stakeholders from different regions and sectors easily
- Integrate large-scale renewable energy projects in existing infrastructures

Hydrogen Marketplace of Berlin/Brandenburg



<https://www.localiser.de/h2marktplatzzbb>

We are looking forward to new partnerships!



Lizenz

Except where otherwise noted, this work and its content (texts and illustrations) are licensed under the Attribution 4.0 International (CC BY 4.0)

See license text for further information.

Please cite as „RLI“ © [Reiner Lemoine Institut](#) | [CC BY 4.0](#)



Juliane Arriens

Tel: +49 (0)30 1208 434 84

E-Mail: juliane.arriens@rl-institut.de

Web: <http://www.rl-institut.de>

Twitter: [@rL_institut](#)