

Conrad Brussels *****

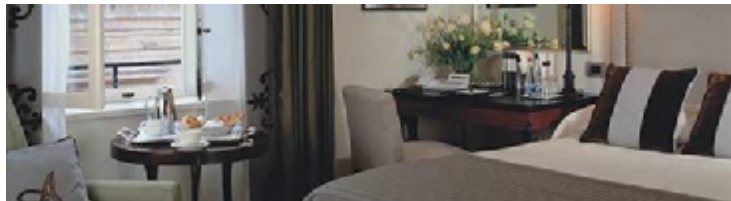
Avenue Louise 71
1050 Brussels



The Conrad Brussels is located on the famed and highly fashionable Avenue Louise in Belgium, and offers exceptionally stylish and elegant surroundings, where you can discover the luxury of being yourself. The main tourist attractions of Belgium, the airport and the most elegant shops in the city are all easily accessible from the Conrad Brussels luxury hotel.

Hotel Amigo *****

Rue de l'Amigo 1-3
1000 Brussels



Superbly located in the very heart of Brussels, adjacent to one of the most beautiful squares in Europe, Grand Place, close to Brussels' financial district and within easy walking distance of the antiques district of Le Sablon, Hotel Amigo now provides a stylish and central base from which to explore the city. Each one of the bedrooms and suites at Hotel Amigo are individual in style, spacious and luxurious, with some offering views towards Grand Place and others extensive views over the rooftops of Brussels.

Le Châtelain *****

Rue du Chatelain 17
1000 Brussels



Le Châtelain is ideally located just off the stylish Avenue Louise, benefiting from a calm and secluded atmosphere and yet situated at the epicenter of the city's business and financial district. It is just a few steps from the most elegant antique shops and fashion boutiques in town, and within a short taxi drive of the seat of European institutions and the international Thalys and Eurostar Railway station. The historic city center, the major theatres and renowned museums and art galleries are easy to reach.

Le Meridien *****

Carrefour de L'Europe 3
1000 Brussels



Le Méridien Brussels is ideally located very close to the Grand-Place in the historic heart of Brussels. Facing the Palais des Congrès and the Central Station, Le Méridien Brussels enjoys direct access by railway to the International Airport and to the TGV / Eurostar and Thalys terminal.

Hilton Brussels *****

38, Boulevard de Waterloo
1000 Brussels

Elegant five-star city-centre hotel on the fashionable Boulevard de Waterloo. 2km from the international train station, 16km from Brussels airport & easily accessible by road. The Grand'Place, musea, shops & the Royal Palace are within easy walking distance & the European institutions are 5 minutes away by metro. Hotel features 431 rooms & suites, Executive rooms, 20 meeting rooms & 2 restaurants, fitness centre & beauty salon. Wireless internet available in all rooms and public rooms.



Bristol Stéphanie *****

91-93 Avenue Louise
1050 Brussels

With its impressive location on the Avenue Louise, Brussels' most fashionable shopping and business district, the 5 star Hotel Bristol Stéphanie is ideally situated for both business and leisure travelers.



Jolly Hotel du Grand Sablon *****

Rue Bodenbroek 2/4
1000 Brussels



The Jolly Hotel du Grand Sablon is ideally located on the Place du Sablon, one of the most beautiful area in Brussels. The hotel offers exceptionally stylish and elegant surroundings, where you can discover art galleries, museum and some of the best restaurants of Brussels.

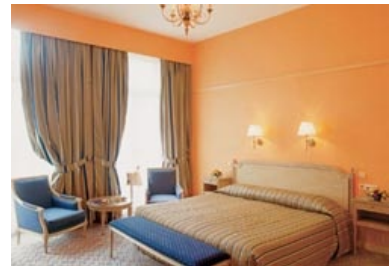


The Metropole *****

31, Place De Brouckere
1000 Brussels



The Metropole Hotel is a delightful 5 star hotel located in the heart of Brussels, the capital of Europe! This elegant hotel is over 110 years old and although the hotel has been completely refurbished the sensitive restoration has preserved many of the original interior and exterior hotel features making The Metropole Hotel the only 19th hotel in the cultural and cosmopolitan capital.



Royal Windsor *****

5 Rue Duquesnoy
1000 Brussels

Elegant and sophisticated, the five-star Royal Windsor Hotel Grand Place boasts the best location in Brussels. Just off the world-famous Grand Place and in front of the Grand Casino Brussels this "Bruxelles" hotel is a member of the Leading Hotels of the World and is within walking distance from Brussels' Central Station, the Antique Market on the Sablon, the Royal Covered Galleries and Brussels' Royal Palace Gardens. Brussels' Zaventem Airport is only a 20-minute journey away.



Brussels Marriott Hotels ****

Rue A. Orts 3-7
1000 Brussels



Within walking distance of its most revered landmarks, including the Grand Place and the Mont des Arts, you'll find the Brussels Marriott Hotel. Set where an island once stood in a flowing river, this grand Brussels hotel now offers luxurious accommodations in a historic building.

Crown Plaza Brussels City Center ****

Rue Gineste 3
1210 Brussels



Last year the guest rooms have been fully refurbished. The architect, Karin Espinosa Morel, turned to the Art Nouveau lines and curls of Gustav Klimt (1862-1918) for inspiration, echoing Le Palace's (1908) original turn-of-the-century style. She combined this with a cool modern touch and the latest comforts such as air conditioning, data lines, a working desk with suitable lighting. Just a short walk from the tourist centre Grand Place and the train station. Beside the botanical gardens and close to the main shopping area, you can easily reach major exhibition centres and the European institutions.

NH Atlanta Brussels ****

Boulevard Adolphe Max 7
1000 Brussels

Located 50m from the metro station "De Brouckère" and parallel to the main shopping street, the hotel is within walking distance from the Grand Place and from the European Community in the business district. Easily accessible from all highways.



Sofitel Toison d'Or ****

40,avenue de la Toison d'Or
1050 Brussels



Ideally located in the heart of the city, near the antique shops and museums, overlooking the prestigious shopping area L'Espace Louise and a few minutes from European institutions and NATO, this hotel with garden and terrace is a prestigious address in Brussels.

Tulip Inn Brussels Boulevard ***

Avenue du Boulevard 17
1210 Brussels

The hotel is situated at Place Rogier. Within walking distance from the famous Grand Place with its Manneken Pis, and the main shopping area. Easy access to metro, main train stations as well as the Brussels Ring.



Tulip Inn Brussels Boulevard