

30th OSCE Economic and Environmental Forum
FIRST PREPARATORY MEETING
Vienna, 14-15 February 2022
Session 4

Presentation by Mr. Kari Puumalainen, Ylä-Savo Vocational College, Finland

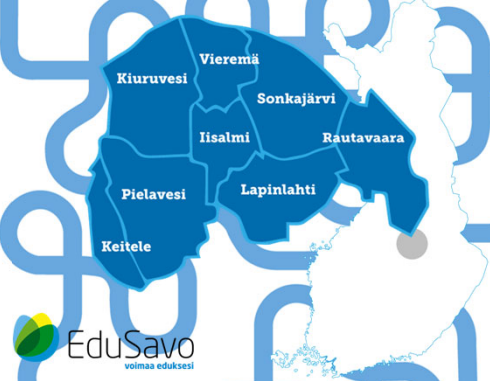
Promoting lifelong learning as well as vocational and professional training as essential tools for human capital development

Lifelong learning in regional partnerships; how did COVID 19 affect vocational training?

Kari Puumalainen
Director / Principal
Ylä-Savo Municipal Federation of Education
FINLAND

ysao

**Ylä-Savo Municipal Federation of Education /
Ylä-Savo Vocational College**



- Owned by 8 municipalities
- Operation area: 9310 km²
- Population: ca 60 000
 - About 6,5 inhabitants / km²
- Full time students: 1600 study years
- Individual students: 4000
- Sales 21 M€

EduSavo
voimaa eduksesi

**AMMATILISEN KOULUTUKSEN
TULOKSELLISUUSRAHOITUS**

*Ammatillisen koulutuksen
laadypalkinto
2017*

Opetus- ja
kulttuuris-
ministeriö

**Quality reward from Ministry of Education 2017
Theme knowledge management**

ysao
YLÄ-SAVON AMMATTIOPISTO

Unleash your skills

Kari Puumalainen
15.2.2022 2



Strengths of the Ylä-Savo region

- ✓ A lot of export companies
- ✓ Broad economic structure
- ✓ Extensive education system with high quality education
- ✓ High level experts in companies
- ✓ Long tradition of co-operation

Major challenge

- ✓ Age structure of people

The amount of working age people is reducing 25% in 15 years!

Shortage of skilled workers now and especially in the future

Ysao
YLÄ-SAVON AMMATTIOPISTO

Unleash your skills

Kari Puumalainen
15.2.2022 3

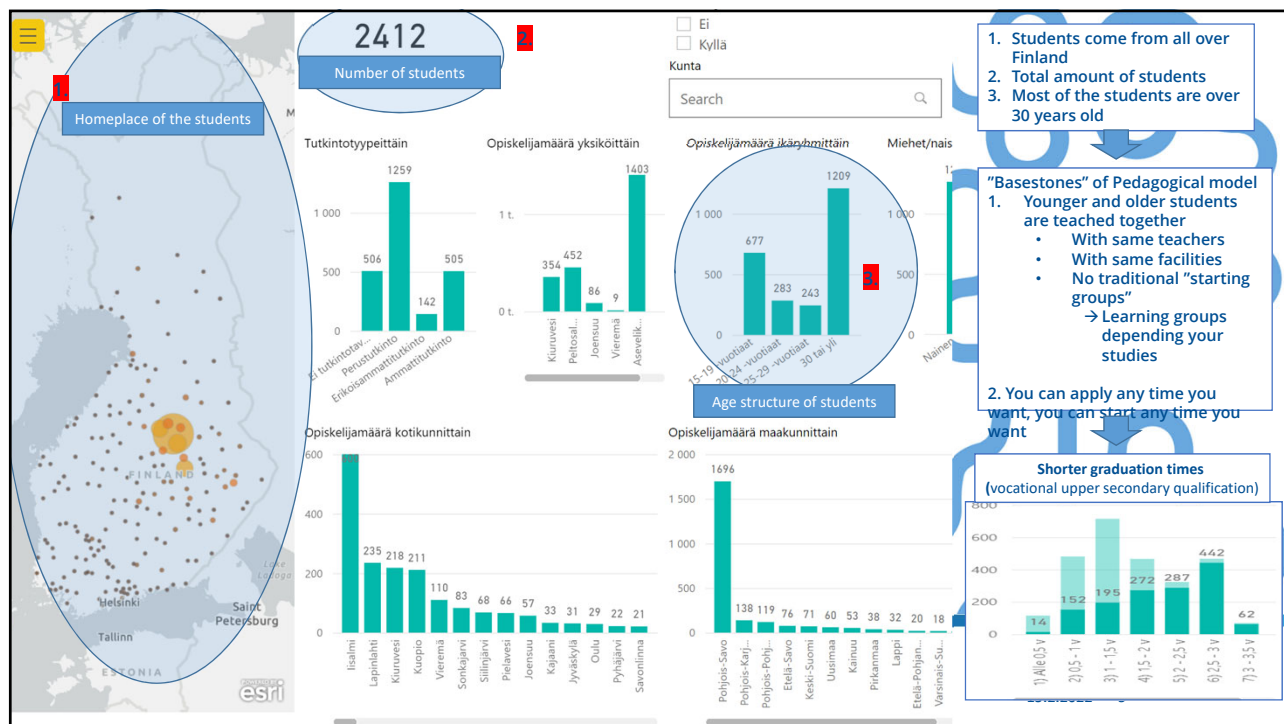
Some basestones of Finnish Vocational education system

- **Competence based system** – “when you know how to work, you're done”
- **We don't measure time spend in vocational college**
 - We measure the skills you have gained
- **Identification and recognition of prior learning**
 - You can gain your skills anywhere, anytime
- **Work based learning**
 - Strong co-operation with working life and colleges
- **Foresight process**
 - scenario work and anticipation of skills needs
- **Compulsory education until 18 years (or after you have graduated)**
 - No costs for students (or very low fees)
- **No dead ends in learning** – you can continue via vocational path to university (if your abilities are sufficient)

Ysao
YLÄ-SAVON AMMATTIOPISTO

Unleash your skills

Kari Puumalainen
15.2.2022 4



Major changes in the implementation of vocational education and training (fastened by COVID19)

Personal competence development plan (PCDP)

Before COVID

Focus on

- Learning inside educational institutions
→ Dependence of school buildings
- Workbased learning
- focus on "how training is most convenient for teacher and VET-provider" ☺

eLearning was seen more as a possibility to expand "normal daily training inside colleges"

- independent studies (Time and place independent learning) (24/7/365)

Student care services mainly in school buildings (8:00 - 16:00)

Now

"Multichannel" education

- Learning inside educational institutions **and/or**
- Workbased learning **and/or**
- eLearning
 - Online **and/or**
 - Time and place independent learning (24/7/365)

Accessibility of training is on focus!
Dependence on school properties has decreased
Multi-place work has become the "new normal"
Very strong use of digitalization in producing learning possibilities and other services to students and personnel.

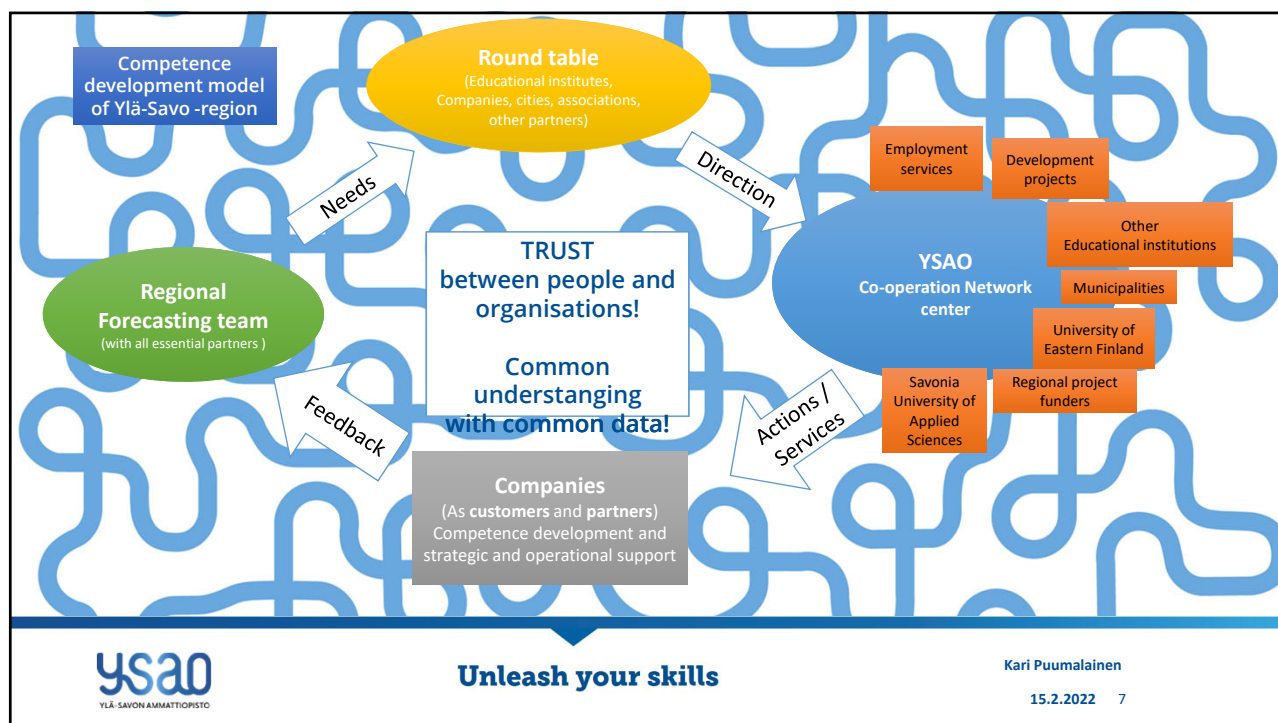
Student care services are currently being developed into online services with significantly longer opening hours (+ 24/7/365 services)

Covid19 has accelerated change.
Things have been done in a year that would normally have taken several years to complete

YSAO
YLÄ-SAVON AMMATTIOPISTO

Unleash your skills

15.2.2022 6



For more information, please contact!

Director Kari Puumalainen
Ylä-Savo Municipal Federation of Education
kari.puumalainen@ysao.fi
tel. +35840177860

YSAO
YLÄ-SAVON AMMATTIOPISTO

Unleash your skills

Kari Puumalainen
15.2.2022 8