




## CBSS and Sustainable Maritime Transport in the Baltic Sea Region

Director General Jan Lundin ([jan.lundin@cbss.org](mailto:jan.lundin@cbss.org))  
Secretariat of the Council of the Baltic Sea States

OSCE Economic and Environmental Forum, Prague 15 Sep 2011

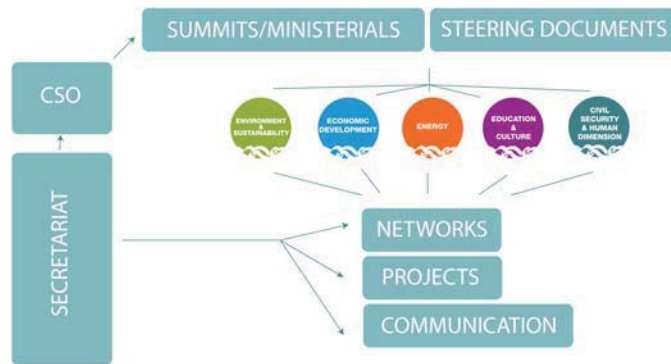
## The Council of the Baltic Sea States

- was created in 1992, responding to the fall of the iron curtain
- provides an intergovernmental platform for regional cooperation
- gathers all 9 littoral states, Norway, Iceland and the European Commission
- receives strategic guidance from annual Summits and Ministerial meetings
- works through network – and project – based activities
- aims to improve the competitiveness and team spirit of the Baltic Sea Region
- rotates chairmanships yearly, currently (until 30 June) Germany



2

## The CBSS today



3

## CBSS Long-term priorities - main networks



CBSS Baltic 21



Expert Group on Maritime Policy



EuroFaculty Pskov, Ars Baltica, Monitoring Group on Cultural Heritage



Baltic Sea Regional Energy Cooperation (BASREC)



Task Force Against Trafficking in Human Beings, EG on Nuclear and Radiation Safety, EG on Children at Risk, Border Control Cooperation, Civil Protection Network (Task Force on Organised Crime)

4

## CBBS Expert Group on Maritime Policy: competitiveness vs. protection of the maritime ecosystem.

- 15% of the Worlds Cargo Traffic, and constantly increasing, roughly in line with GDP growth. More than 2000 vessels at sea at any given moment
- Problematic Environmental Situation, e.g. Eutrophication and large toxic algae blooms. Annual ship emissions: - SOx: 135 000 tonnes - NOx: 400 000 tonnes - CO2: 19 million tonnes. NOx emissions from shipping are comparable to the combined land-based NOx emissions from Denmark and Sweden.
- Immediate Challenge: IMO Emission Control Area (ECA) regulations regarding sulphur- and NOx-emissions in the Baltic Sea: From 2015 sulphur content of fuel oil not to exceed 0,1% m/m. New ships built as of 2016 shall reduce emissions by appr. 80%. Risks of diversion of traffic.
- The CBSS response: EGMP, cross-sectoral, composed of representatives from all 11 CBSS MS (PMs Offices, MFAs, Transport Ministries, Maritime Administrations) and European Commission (DG Mare). Current Chair: Mr Dietrich Seele, Ministry of Transport, Germany. Three year mandate 2010-2012. Organises stakeholder meetings and events on e.g. LNG-introduction (cf. Recent terminals at Swinoujsce (PL), Nynäshamn(SE)), Maritime clusters, Research networks

5

## Cooperation and Coordination by political actors

- Baltic Sea Parliamentary Conference (has Maritime Group)
- Council of Baltic Sea States (has Maritime Group)
- Baltic Sea Subregional Cooperation Council (has Maritime Group)
- Helsinki Commission (on Environment) (has Maritime Group)
- European Commission (EU Baltic Sea Region Strategy – projects in priority areas 4 an 11)
- Northern Dimension Partnership on Transport and Logistics (projects)

6

## BSPC Resolution 30 August 2011 (excerpts)

- to intensify research and to **promote the use of alternative marine fuels** such as – for example - Liquefied Natural Gas (LNG) in the Baltic Sea Region and others by supporting innovative emission reduction technologies and by creating incentives for investments in the development of the necessary port infrastructure with a well developed distribution network and uniform industry- and usage standards;
- against the background of new studies on the implications of the intended reduction of the sulphur content of ship fuels to 0.1 % from the year 2015 in the framework of the international MARPOL convention, **take precautions and to start initiatives to prevent a modal backshift in traffic from sea to land;**
- to support incentives for the modification of existing ships, and to work actively within the International Maritime Organization (IMO) for a speedy designation of further sea areas, such as the Mediterranean Sea, as Sulphur Emission Control Areas (SECA), thereby **abolishing competitive disadvantages** for the Baltic Sea Region;

7

## SOME MAJOR REGIONAL ACTIVITIES AND PROJECTS

- JOINT MEETINGS BSPC-CBSS-BSSSC
- LNG WORKSHOP (OSLO, MARCH 2011)
- BALTIC TRANSPORT FORUM (MAY 2012)
- EU FUNDED PROJECTS ON
  - WASTE HANDLING ON BOARD (BALTIC MASTER)
  - REDUCING EMISSIONS/IMPROVING SHORESIDE FACILITIES (INNOSHIP, CLEAN SHIP)
- MORE INFO UNDER
  - <http://www.cbss.org/Economic-Development/virtual-communication-platform-on-maritime-policy>

8