

# Municipal Offices for Communities and Return (MOCRs) 2017\*

(January–September 2017)\*

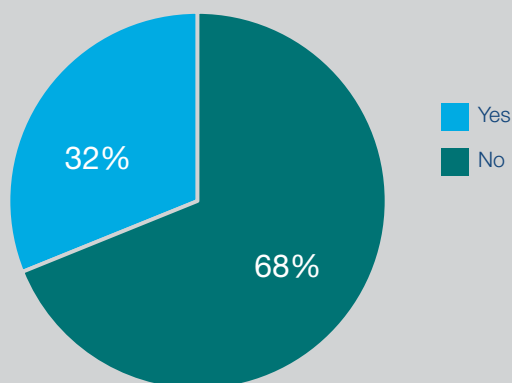
Municipal Offices for Communities and Return are obligatory for all municipalities and are mandated to protect communities' rights, ensure equal access to services and create conditions for sustainable return. MOCRs directly report to the Mayor, and the size of the office and number of posts is determined by the percentage of communities residing in the municipality and their needs, as well as the number of planned or expected returnees or repatriated persons. Since their introduction in 2010, MOCRs have been established in 34 municipalities. They have not been established in the four northern municipalities. Key documents regulating the establishment and mandate of the MOCRs are Regulation 02/2010 for the municipal offices for communities and return and MOCR Terms of Reference - Standard Operating Procedures.

\* The MOCR mandate expired following the local elections in October 2017.

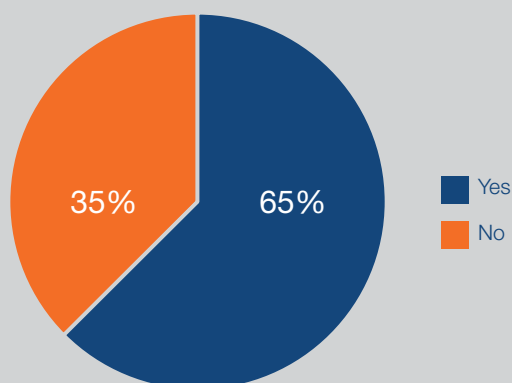
## Establishment

Since their introduction in 2010, MOCR's have been established in all municipalities, except in the four in northern Kosovo.

## Functioning & Reporting

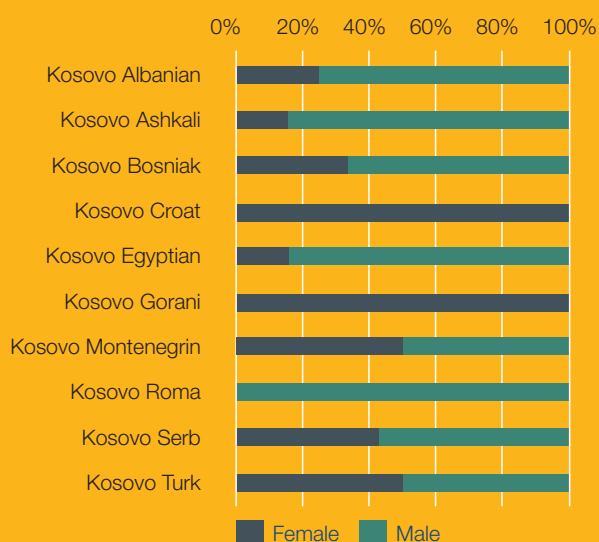


MOCRs with work plans in 2017

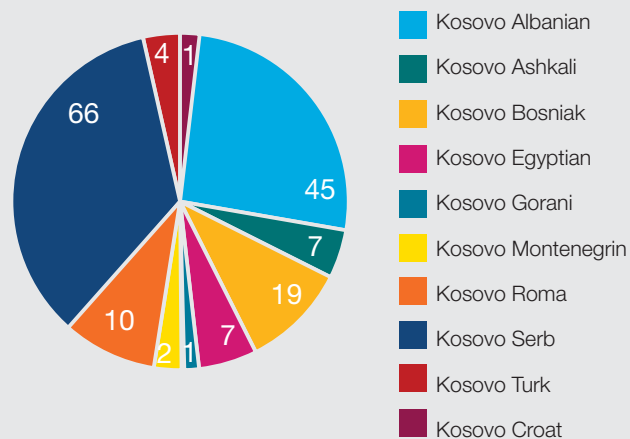


MOCRs that submitted annual reports in 2017

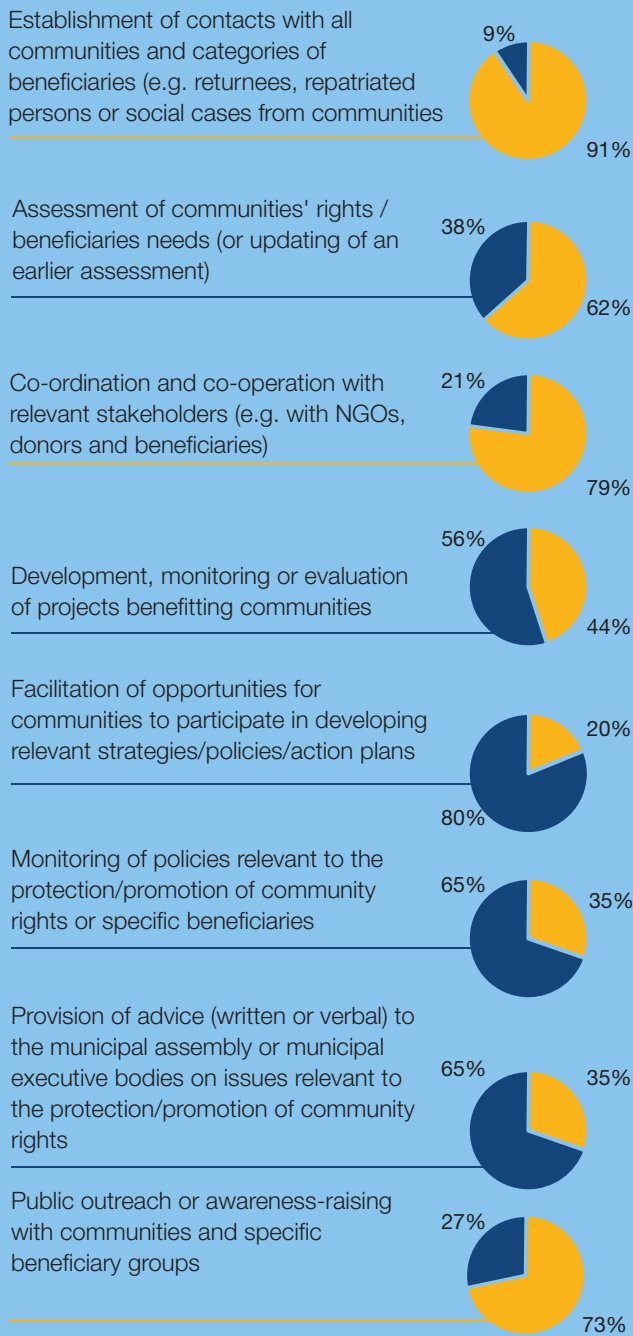
## Gender representation of MOCRs by community



## Community representation of MOCRs



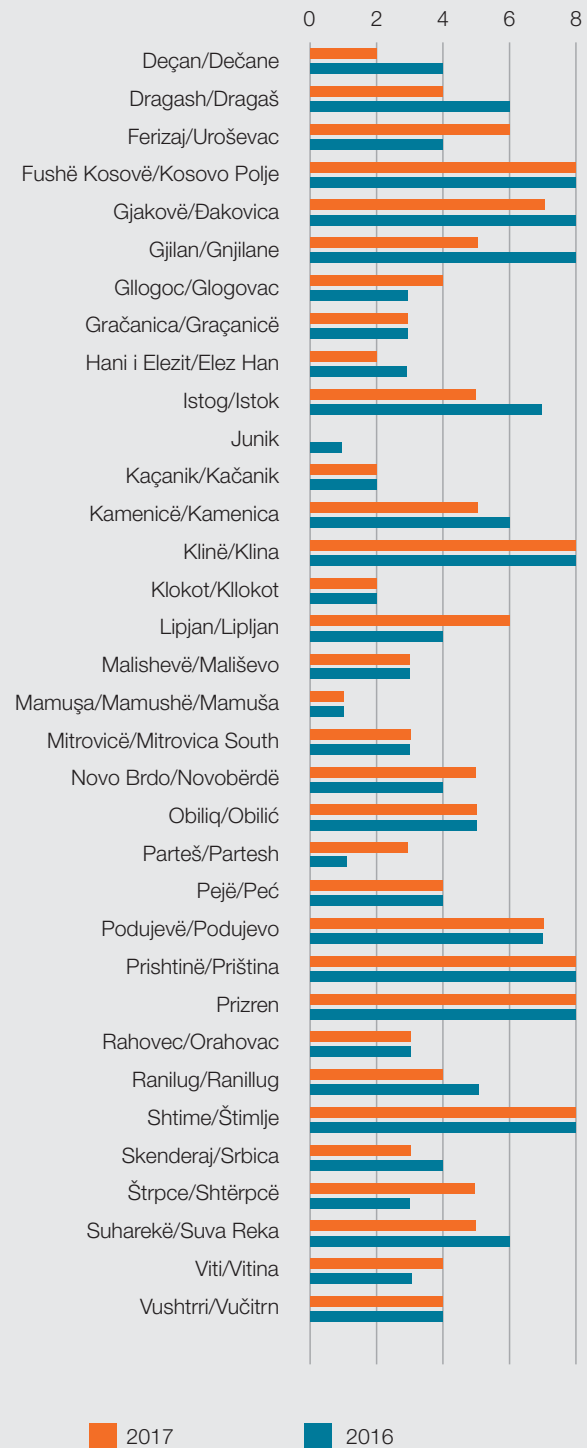
### Percentage of MOCRs Undertaking Substantive Duties\*



\*Duties outlined in the legal and policy framework that are regularly monitored by OSCE

Yes No

### Number of Substantive Duties Undertaken



The OSCE Mission in Kosovo supports improved communities' participation in public decision-making and governance processes and institutions. To assist in this effort the OSCE regularly monitors the performance of municipal communities' protection mechanisms. These information sheets aim to provide the relevant institutions with indicators that can assist in identifying gaps and improvement in compliance.