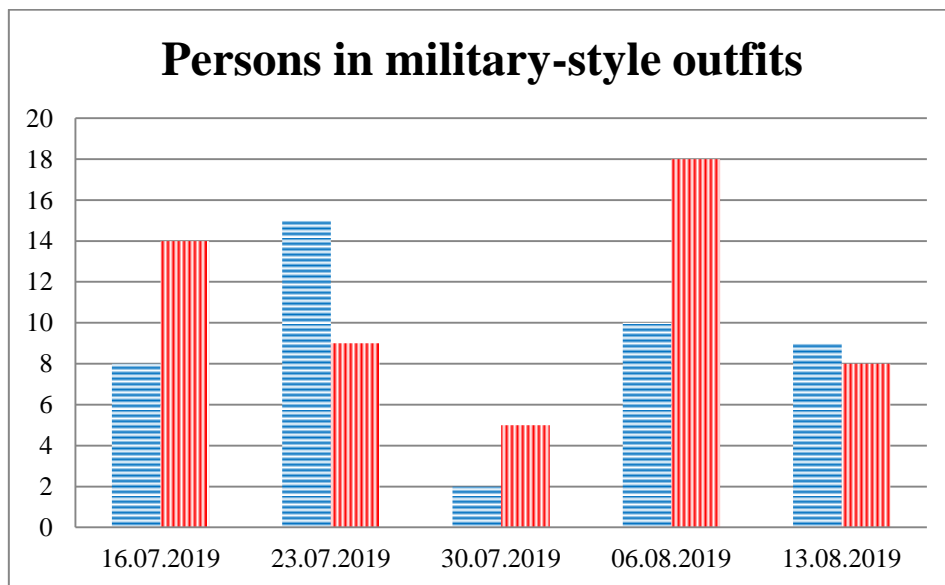
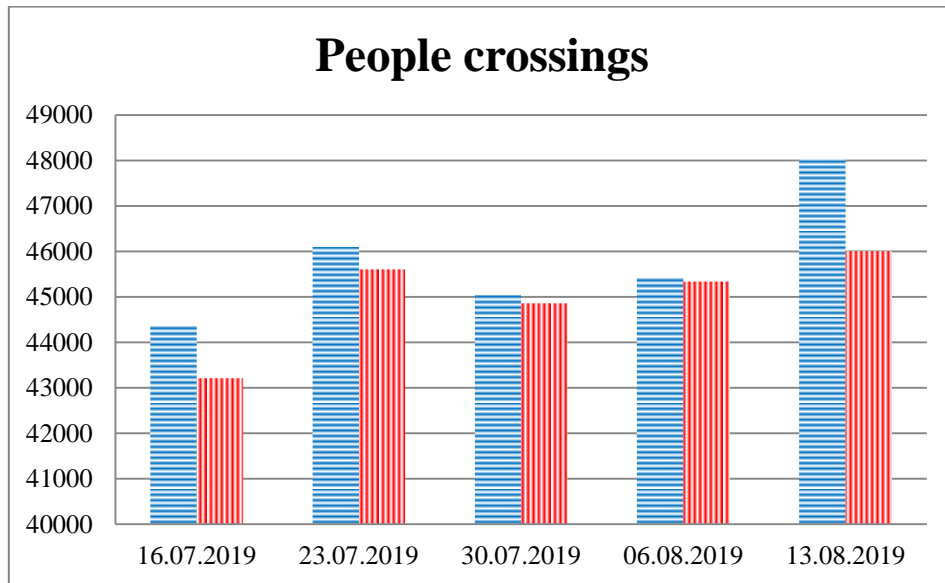


TRENDS AND FIGURES AT A GLANCE

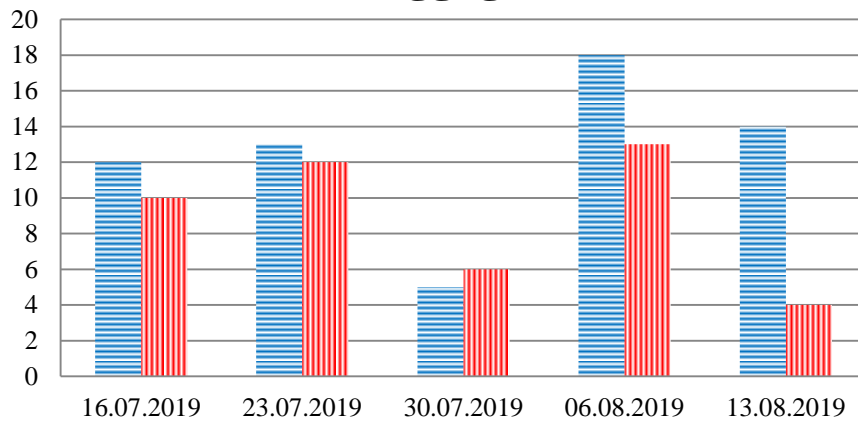
(For the period from 09:00 on 09 July to 09:00 on 13 August 2019)¹

■ to the Russian Federation ■ to Ukraine

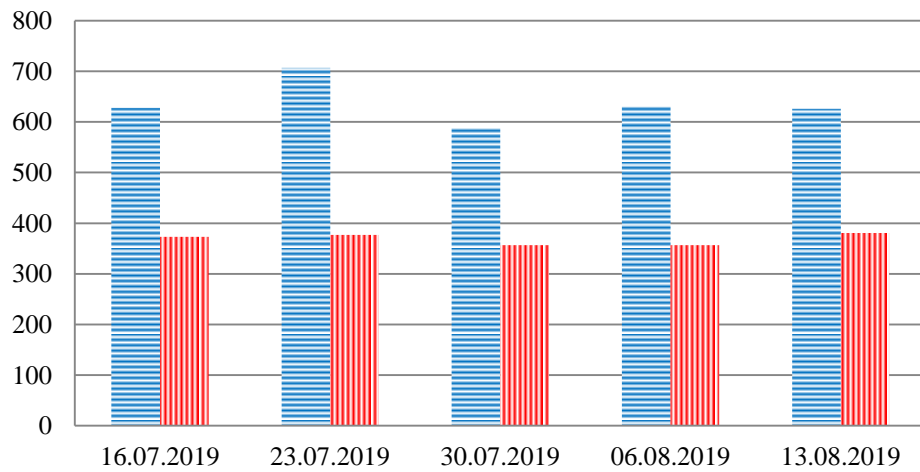


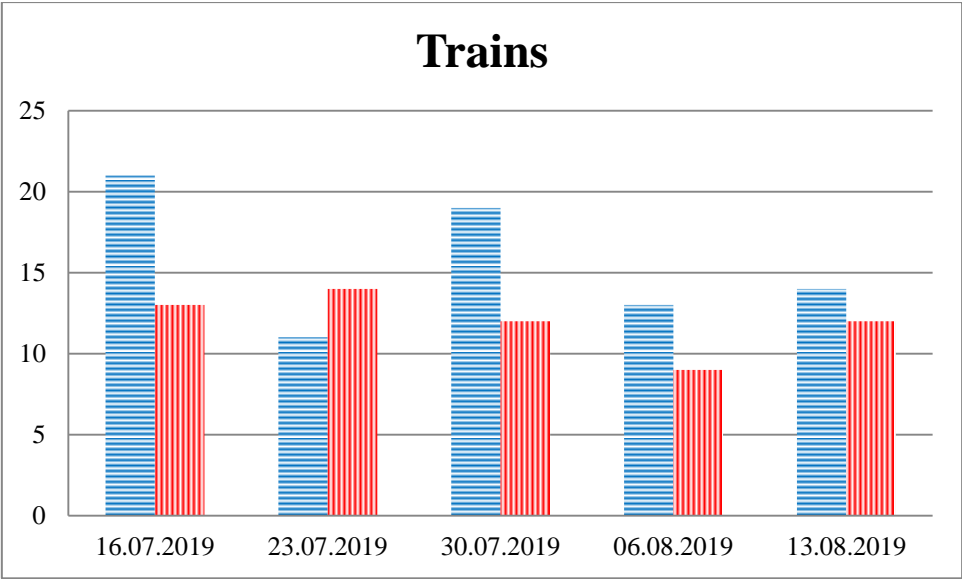
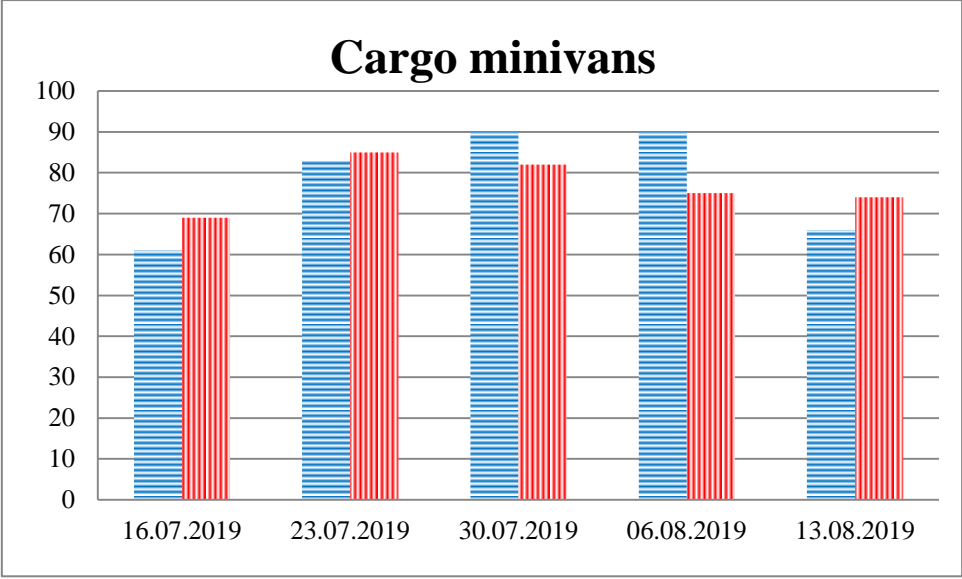
¹ The dates at the bottom of each graph refer to the day when the Weekly Reports were issued and include the observations made during the previous seven days.

Families with a significant amount of luggage



Trucks





Timetable of the trains heard at the Gukovo BCP

Date	To RF	To UA
06/08/2019	15:01	14:03
	15:27	15:52
	17:45	22:00
07/08/2019	00:15	00:42
	15:53	23:46
08/08/2019	06:33	18:38
	20:30	
09/08/2019	12:15	03:45
	18:53	16:46
10/08/2019	08:31	06:11
	16:35	
11/08/2019	16:10	05:40
12/08/2019	07:00	04:48
	12:40	
13/08/2019		08:45